

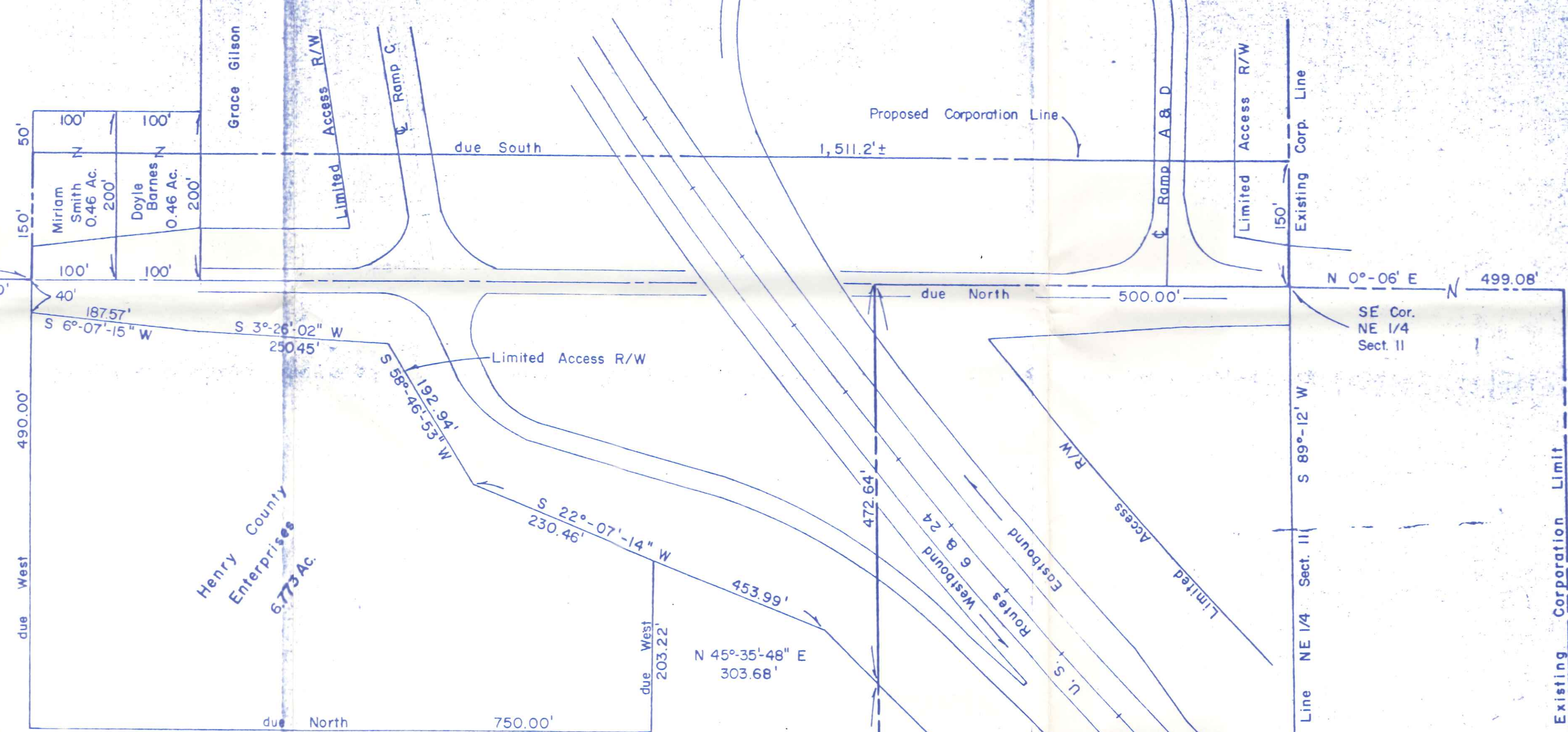
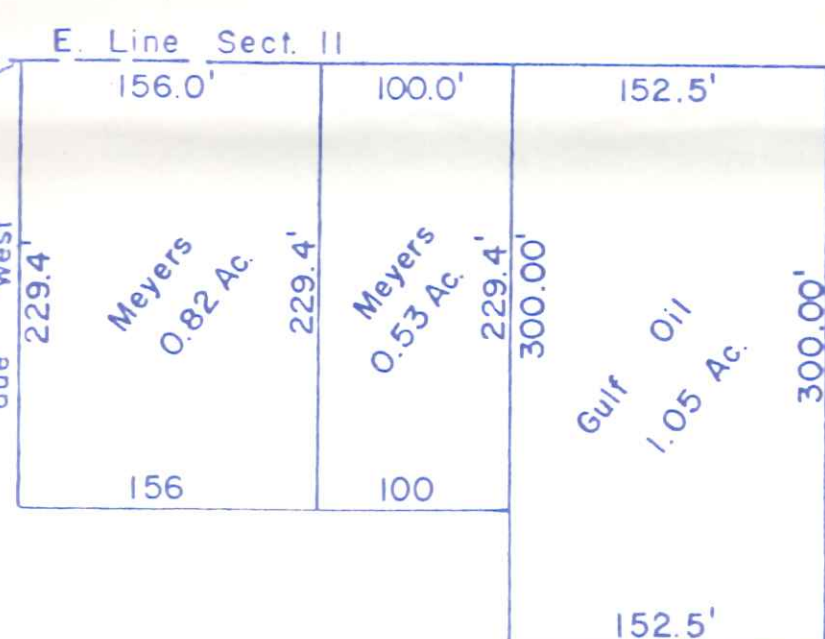
Scale 1" = 100'

Legend

- Existing Corporation Line
- Proposed Corporation Line
- Property Line

NE Cor. Sect. II

Proposed Corporation Line



Center Line "R"

1,305.61

Section II

North Line Northeast Quarter Section II

NW Cor. E 1/2 NE 1/4 Sect. II

Mabel Detray 45.65 Ac.

West Line East Half Northeast Quarter Section II

Proposed Corporation Line

PROPOSED ANNEXATION
TO THE
CITY OF NAPOLEON, OHIO

East Half Northeast Quarter Section II &
West Part OF Northwest Quarter Section
12, Town 5 North, Range 6 East, Napoleon
Township, Henry County, Ohio

Annexation plot prepared from
recorded survey and deed data by:
E.C. GERKEN AND ASSOCIATES
Consulting Engineers and Surveyors
Napoleon, Ohio

Loop Bonaparte Jr.